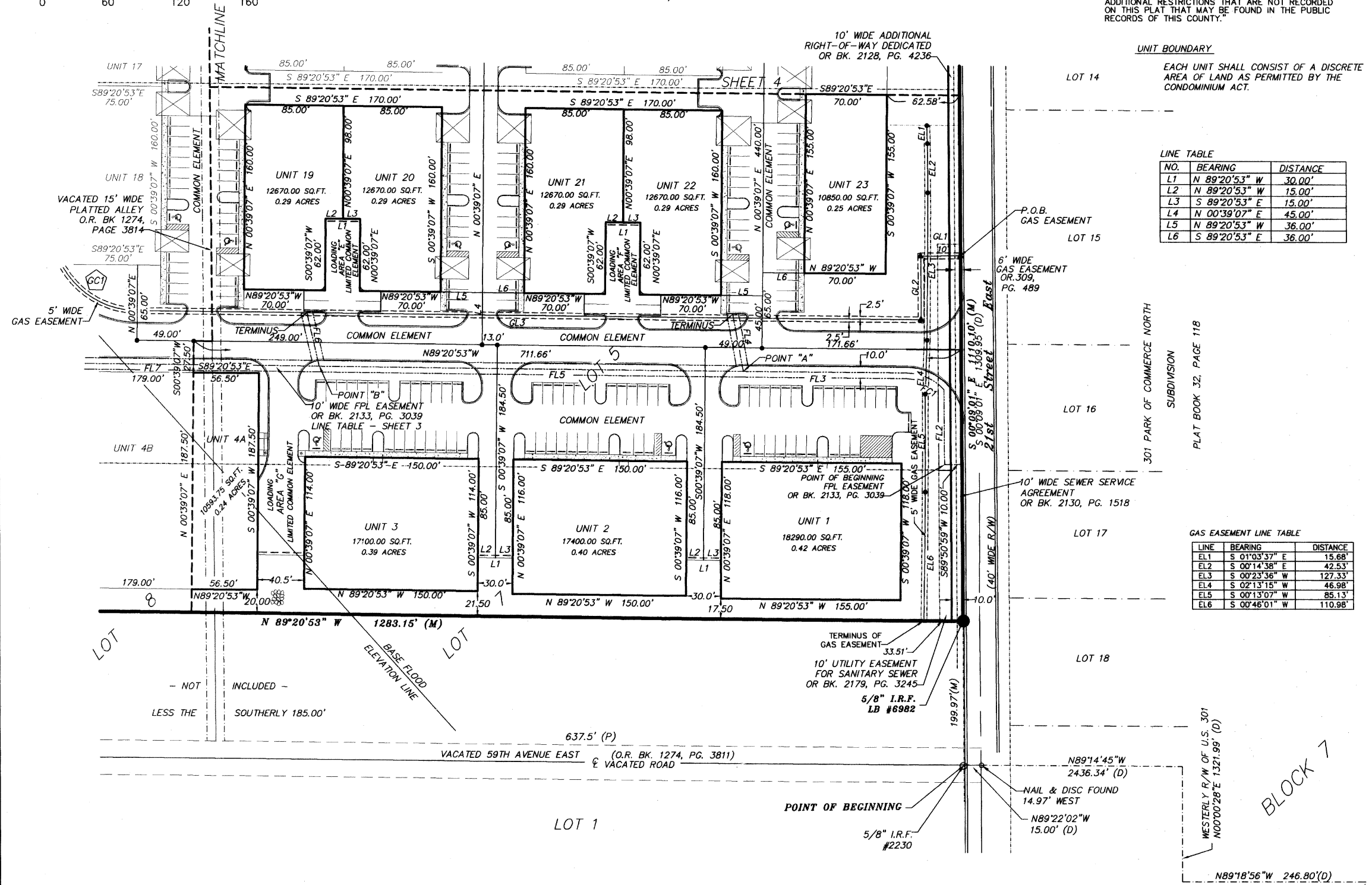
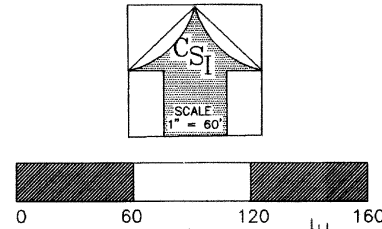


PINES II INDUSTRIAL PARK

A LAND CONDOMINIUM
LYING AND BEING IN

SECTION 18, TOWNSHIP 35 SOUTH, RANGE 18 EAST
MANATEE COUNTY, FLORIDA

"NOTICE: THIS PLAT, AS RECORDED IN ITS GRAPHIC FORM IS THE OFFICIAL DEPICTION OF THE SUBDIVIDED LANDS DESCRIBED HEREIN AND WILL IN NO CIRCUMSTANCES BE SUPPLANTED IN AUTHORITY BY ANY OTHER GRAPHIC OR DIGITAL FORM OF THE PLAT. THERE MAY BE ADDITIONAL RESTRICTIONS THAT ARE NOT RECORDED ON THIS PLAT THAT MAY BE FOUND IN THE PUBLIC RECORDS OF THIS COUNTY."



UNIT BOUNDARY
EACH UNIT SHALL CONSIST OF A DISCRETE AREA OF LAND AS PERMITTED BY THE CONDOMINIUM ACT.

LINE TABLE

NO.	BEARING	DISTANCE
L1	N 89°20'53" W	30.00'
L2	N 89°20'53" W	15.00'
L3	S 89°20'53" E	15.00'
L4	N 00°39'07" E	45.00'
L5	N 89°20'53" W	36.00'
L6	S 89°20'53" E	36.00'

GAS EASEMENT LINE TABLE

LINE	BEARING	DISTANCE
EL1	S 01°03'37" E	15.68'
EL2	S 00°14'38" E	42.53'
EL3	S 00°23'36" W	127.33'
EL4	S 02°13'15" W	46.98'
EL5	S 00°13'07" W	85.13'
EL6	S 00°46'01" W	110.98'

GAS LINE EASEMENT LINE TABLE

LINE	ANGLE	DISTANCE
GL1	S 89°45'45" W	34.36'
GL2	S 00°14'05" E	55.00'
GL3	N 89°20'53" W	677.02'
GL4	N 00°39'07" E	119.94'
GL5	N 89°20'53" W	152.87'

GAS LINE EASEMENT CURVE TABLE

CURVE	RADIUS	ARC LENGTH	CHORD LENGTH	CHORD BEARING	DELTA ANGLE
GC1	74.50'	117.01'	105.35'	N 44°20'56" W	89°59'39"

- LEGEND**
- C.M.F. (CONCRETE MONUMENT FOUND) SIZE AND NUMBER DENOTED.
 - PERMANENT REFERENCE MONUMENT (P.R.M.) SET, NUMBER 4091
 - (4" SQUARE CONCRETE MONUMENT)
 - I.P.F. (IRON PIPE) FOUND SIZE AND NUMBER DENOTED
 - I.R.F. (IRON ROD) FOUND SIZE AND NUMBER DENOTED
 - 5/8" IRON ROD WITH PLASTIC CAP STAMPED LB#6687 SET
 - R/W RIGHT OF WAY
 - SQ. FT. SQUARE FOOTAGE
 - PI PARCEL IDENTIFICATION
 - PSM PROFESSIONAL SURVEYOR AND MAPPER
 - LB LICENSED BUSINESS
 - LS LICENSED SURVEYOR
 - ELEV. ELEVATION
 - (P) PLAT DATA
 - (D) DEED DATA
 - (L.C.E.) LIMITED COMMON ELEMENT
 - (F) FIELD DATA
 - (C) CALCULATED DATA
 - POB POINT OF BEGINNING
 - BM BENCHMARK
 - P.R.M. PERMANENT REFERENCE MONUMENT
 - PCP PERMANENT CONTROL POINT
 - CONC. CONCRETE
 - O.R. OFFICIAL RECORDS BOOK
 - PG. PAGE
 - SEC. SECTION
 - TBM TEMPORARY BENCHMARK
 - EXISTING ELEVATION

FILED AND RECORDED
1/29/07 @ 4:04 pm
R. B. SHORE, CLERK
MANATEE COUNTY, FLA.



CLEMENTS SURVEYING, INC.
509 8TH AVENUE WEST
SUITE 140
PALMETTO, FLORIDA 34221
LB #6687 (941) 729-6690 FAX (941) 729-7580