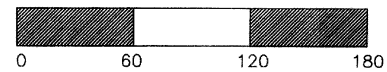


PINES II INDUSTRIAL PARK

A LAND CONDOMINIUM
 LYING AND BEING IN
 SECTION 18, TOWNSHIP 35 SOUTH, RANGE 18 EAST
 MANATEE COUNTY, FLORIDA

"NOTICE: THIS PLAT, AS RECORDED IN ITS GRAPHIC FORM IS THE OFFICIAL DEPICTION OF THE SUBDIVIDED LANDS DESCRIBED HEREIN AND WILL IN NO CIRCUMSTANCES BE SUPPLANTED IN AUTHORITY BY ANY OTHER GRAPHIC OR DIGITAL FORM OF THE PLAT. THERE MAY BE ADDITIONAL RESTRICTIONS THAT ARE NOT RECORDED ON THIS PLAT THAT MAY BE FOUND IN THE PUBLIC RECORDS OF THIS COUNTY."



UNIT BOUNDARY

EACH UNIT SHALL CONSIST OF A DISCRETE AREA OF LAND AS PERMITTED BY THE CONDOMINIUM ACT.

LINE TABLE

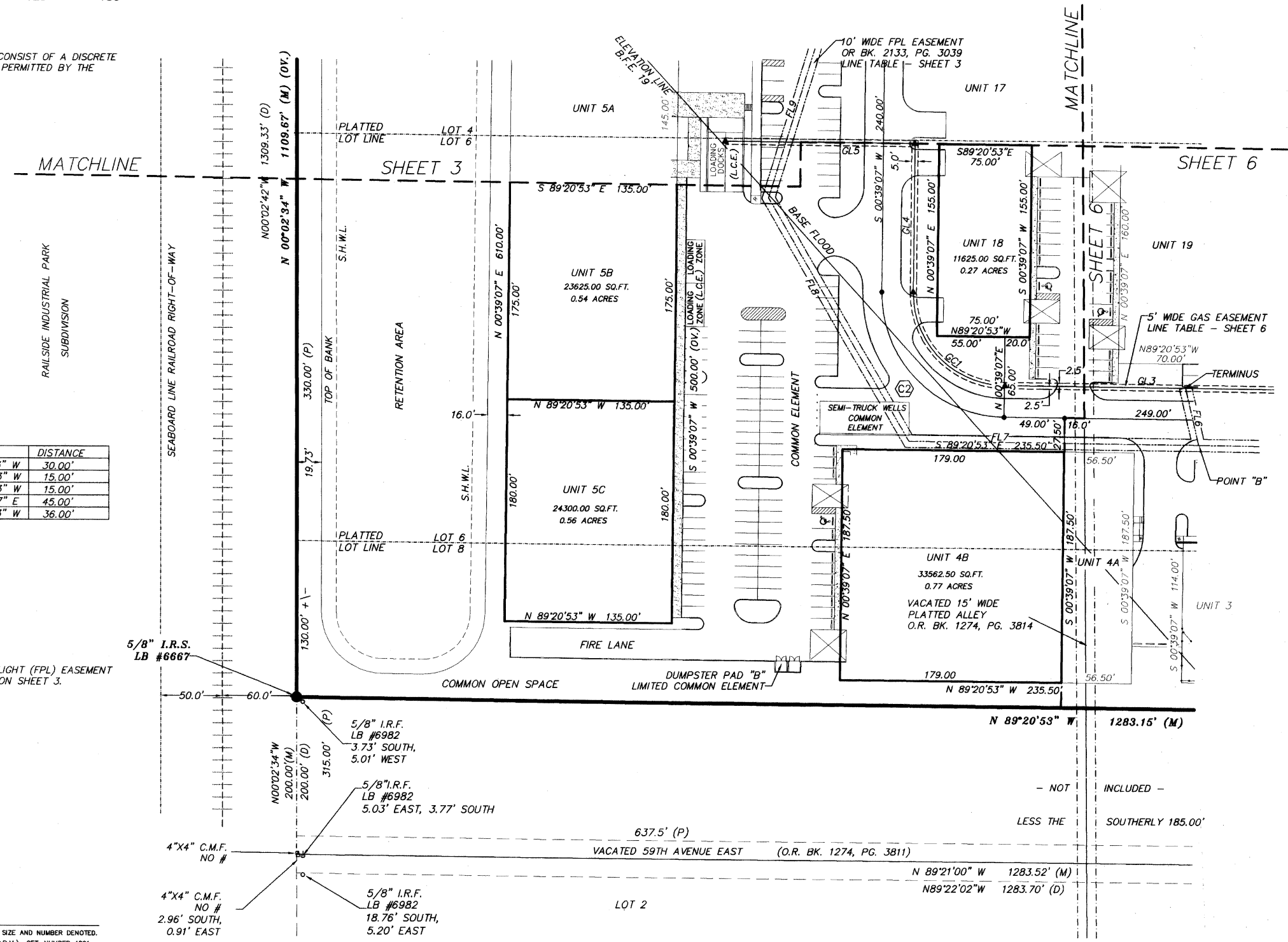
NO.	BEARING	DISTANCE
L1	N 89°20'53" W	30.00'
L2	N 89°20'53" W	15.00'
L3	N 89°20'53" W	15.00'
L4	N 00°39'07" E	45.00'
L5	N 89°20'53" W	36.00'

NOTE: FLORIDA POWER AND LIGHT (FPL) EASEMENT LINE TABLE LOCATED ON SHEET 3.

LEGEND

- C.M.F. (CONCRETE MONUMENT FOUND) SIZE AND NUMBER DENOTED.
- PERMANENT REFERENCE MONUMENT (P.R.M.) SET, NUMBER 4091
- (4" SQUARE CONCRETE MONUMENT)
- I.P.F. (IRON PIPE) FOUND SIZE AND NUMBER DENOTED
- I.R.F. (IRON ROD) FOUND SIZE AND NUMBER DENOTED
- 5/8" IRON ROD WITH PLASTIC CAP STAMPED LB#6667 SET
- R/W RIGHT OF WAY
- SQ. FT. SQUARE FOOTAGE
- PI PARCEL IDENTIFICATION
- PSM PROFESSIONAL SURVEYOR AND MAPPER
- LS LICENSED BUSINESS
- LS LICENSED SURVEYOR
- ELEV. ELEVATION
- (P) PLAT DATA
- (D) DEED DATA
- (L.C.E.) LIMITED COMMON ELEMENT
- (F) FIELD DATA
- (C) CALCULATED DATA
- POB POINT OF BEGINNING
- BM BENCHMARK
- P.R.M. PERMANENT REFERENCE MONUMENT
- PCP PERMANENT CONTROL POINT
- CONC. CONCRETE
- O.R. OFFICIAL RECORDS BOOK
- PG. PAGE
- SEC. SECTION
- TBM TEMPORARY BENCHMARK
- S.H.W.L. SEASONAL HIGH WATER LINE
- EXISTING ELEVATION

CURVE	RADIUS	ARC LENGTH	CHORD LENGTH	CHORD BEARING	DELTA ANGLE
C2	100.00'	157.08'	141.42'	S 44°20'53" E	90°00'00"



CLEMENTS SURVEYING, INC.
 509 8TH AVENUE WEST
 SUITE 140
 PALMETTO, FLORIDA 34221
 LB #6667 (941) 729-6690 FAX (941) 729-7580