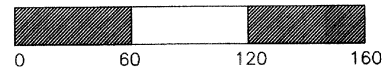
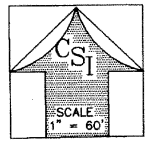


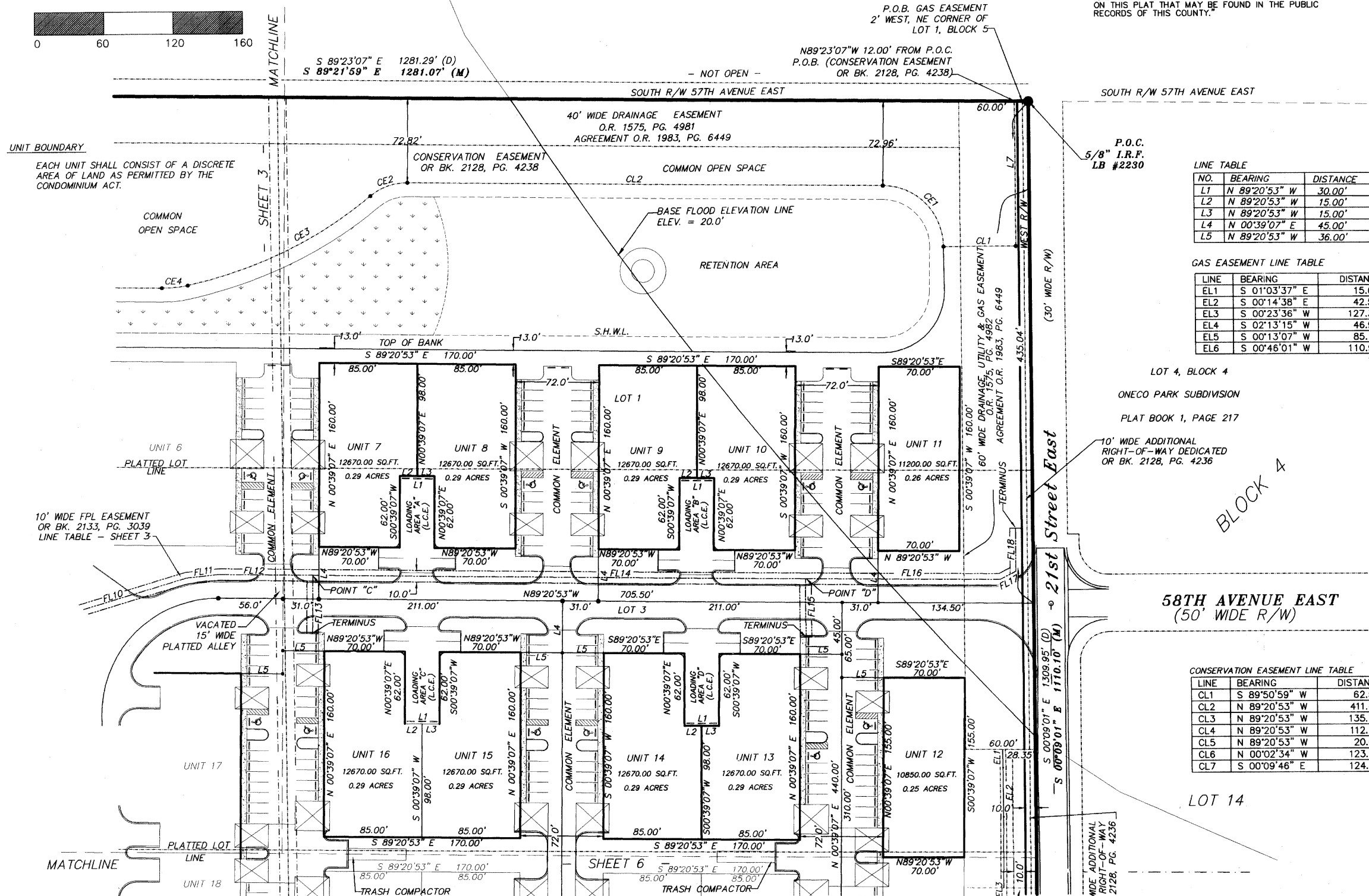
PINES II INDUSTRIAL PARK

A LAND CONDOMINIUM

LYING AND BEING IN
SECTION 18, TOWNSHIP 35 SOUTH, RANGE 18 EAST
MANATEE COUNTY, FLORIDA



NOTICE: THIS PLAT, AS RECORDED IN ITS GRAPHIC FORM IS THE OFFICIAL DEPICTION OF THE SUBDIVIDED LANDS DESCRIBED HEREIN AND WILL IN NO CIRCUMSTANCES BE SUPPLANTED IN AUTHORITY BY ANY OTHER GRAPHIC OR DIGITAL FORM OF THE PLAT. THERE MAY BE ADDITIONAL RESTRICTIONS THAT ARE NOT RECORDED ON THIS PLAT THAT MAY BE FOUND IN THE PUBLIC RECORDS OF THIS COUNTY.



LINE TABLE

NO.	BEARING	DISTANCE
L1	N 89°20'53" W	30.00'
L2	N 89°20'53" W	15.00'
L3	N 89°20'53" W	15.00'
L4	N 00°39'07" E	45.00'
L5	N 89°20'53" W	36.00'

GAS EASEMENT LINE TABLE

LINE	BEARING	DISTANCE
EL1	S 01°03'37" E	15.68'
EL2	S 00°14'38" E	42.53'
EL3	S 00°23'36" W	127.33'
EL4	S 02°13'15" W	46.98'
EL5	S 00°13'07" W	85.13'
EL6	S 00°46'01" W	110.98'

CONSERVATION EASEMENT LINE TABLE

LINE	BEARING	DISTANCE
CL1	S 89°50'59" W	62.52'
CL2	N 89°20'53" W	411.43'
CL3	N 89°20'53" W	135.75'
CL4	N 89°20'53" W	112.23'
CL5	N 89°20'53" W	20.00'
CL6	N 00°02'34" W	123.20'
CL7	S 00°09'46" E	124.62'

CONSERVATION EASEMENT CURVE TABLE

CURVE	RADIUS	ARC LENGTH	CHORD LENGTH	CHORD BEARING	DELTA ANGLE
CE1	52.50'	82.46'	74.24'	N 44°20'53" W	90°00'00"
CE2	50.00'	34.95'	34.24'	S 70°37'29" W	40°03'16"
CE3	376.52'	178.02'	176.37'	S 64°08'33" W	27°05'25"
CE4	100.00'	22.62'	22.57'	S 84°10'11" W	12°57'51"
CE5	100.00'	22.62'	22.57'	N 82°51'58" W	12°57'51"
CE6	376.52'	178.02'	176.37'	N 62°50'19" W	27°05'25"
CE7	50.00'	34.95'	34.24'	N 69°19'15" W	40°03'16"
CE8	50.00'	79.14'	71.13'	S 45°18'16" W	90°41'41"

- LEGEND**
- C.M.F. (CONCRETE MONUMENT FOUND) SIZE AND NUMBER DENOTED.
 - PERMANENT REFERENCE MONUMENT (P.R.M.) SET, NUMBER 4091
 - (4" SQUARE CONCRETE MONUMENT)
 - (1/2" IRON PIPE) FOUND SIZE AND NUMBER DENOTED
 - (1/2" IRON ROD) FOUND SIZE AND NUMBER DENOTED
 - 5/8" IRON ROD WITH PLASTIC CAP STAMPED LB#667 SET
 - R/W RIGHT OF WAY
 - SQ. FT. SQUARE FOOTAGE
 - PI PARCEL IDENTIFICATION
 - PSM PROFESSIONAL SURVEYOR AND MAPPER
 - LB LICENSED BUSINESS
 - LS LICENSED SURVEYOR
 - ELEV. ELEVATION
 - (P) PLAT DATA
 - (D) DEED DATA
 - (L.C.E.) LIMITED COMMON ELEMENT
 - L.A. LOADING AREA
 - (F) FIELD DATA
 - (C) CALCULATED DATA
 - POB POINT OF BEGINNING
 - BM BENCHMARK
 - P.R.M. PERMANENT REFERENCE MONUMENT
 - PCP PERMANENT CONTROL POINT
 - CONC. CONCRETE
 - O.R. OFFICIAL RECORDS BOOK
 - PG. PAGE
 - SEC. SECTION
 - TBM TEMPORARY BENCHMARK
 - S.H.W.L. SEASONAL HIGH WATER LINE
 - EXISTING ELEVATION

LOT 15
CLEMENTS SURVEYING, INC.
509 8TH AVENUE WEST
SUITE 140
PALMETTO, FLORIDA 34221
LB #6667 (941) 729-6690 FAX (941) 729-7580