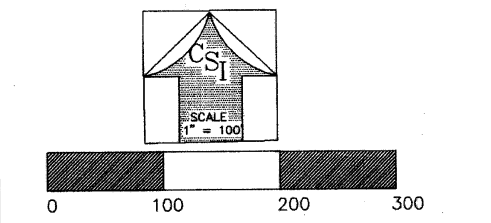


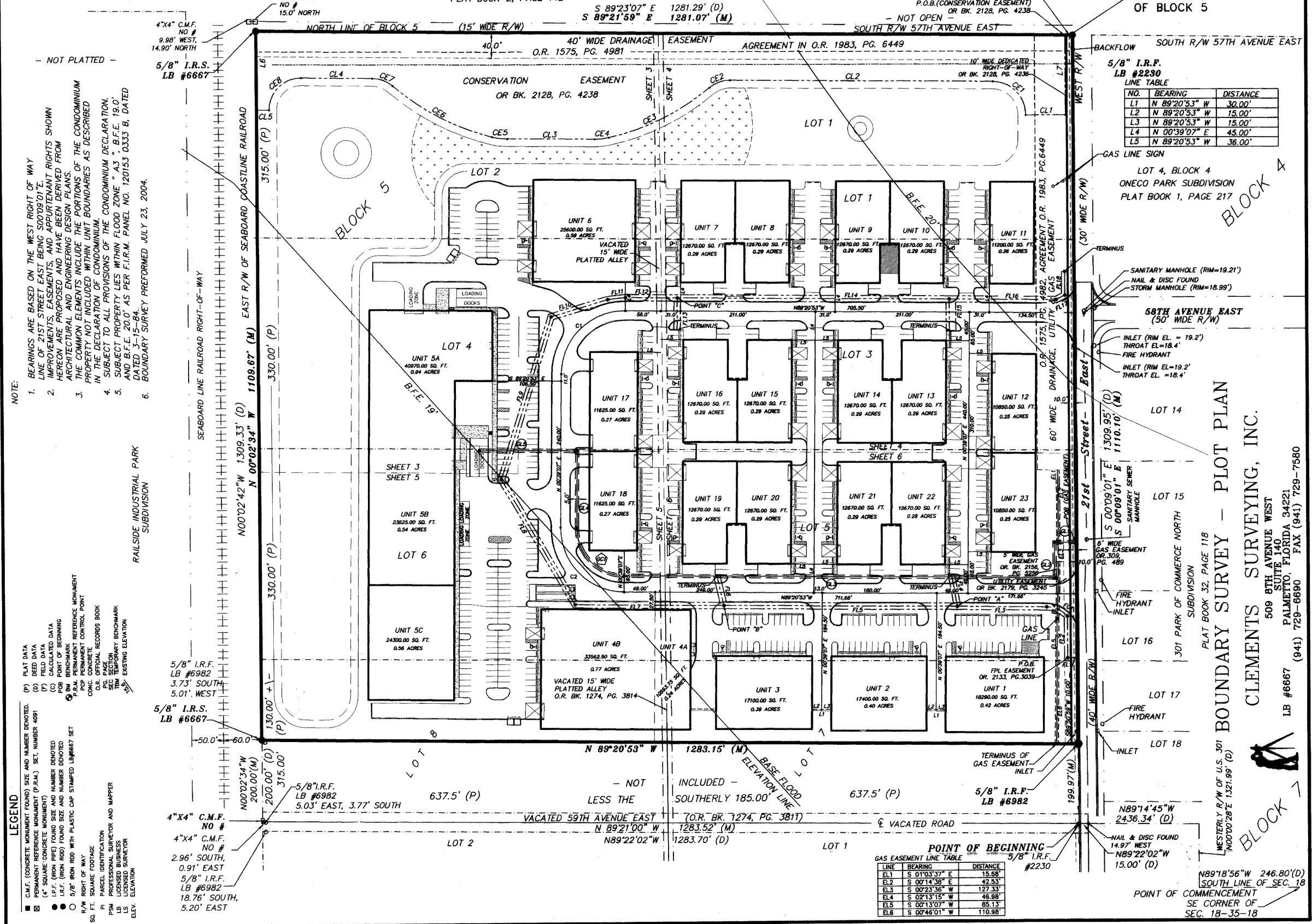
PINES II INDUSTRIAL PARK

A LAND CONDOMINIUM
LYING AND BEING IN
SECTION 18, TOWNSHIP 35 SOUTH, RANGE 18 EAST
MANATEE COUNTY, FLORIDA

NOTICE: THIS PLAT, AS RECORDED IN ITS GRAPHIC FORM IS THE OFFICIAL DEPICTION OF THE SUBDIVIDED LANDS DESCRIBED HEREIN AND WILL IN NO CIRCUMSTANCES BE SUPPLANTED IN AUTHORITY BY ANY OTHER GRAPHIC OR DIGITAL FORM OF THE PLAT. THERE MAY BE ADDITIONAL RESTRICTIONS THAT ARE NOT RECORDED ON THIS PLAT THAT MAY BE FOUND IN THE PUBLIC RECORDS OF THIS COUNTY.



CURVE	RADIUS	ARC LENGTH	CHORD LENGTH	CHORD BEARING	DELTA ANGLE
C1	100.00'	157.08'	141.42'	N 45°39'07" E	90°00'00"
C2	100.00'	157.08'	141.42'	S 44°20'53" E	90°00'00"



- NOTE:
1. BEARINGS ARE BASED ON THE WEST RIGHT OF WAY LINE OF 21ST STREET EAST BEING S00°09'01"E. IMPROVEMENTS, EASEMENTS, AND APPURTENANT RIGHTS SHOWN HEREON ARE PROPOSED AND HAVE BEEN DERIVED FROM ARCHITECTURAL AND ENGINEERING DESIGNS. THE COMMON ELEMENTS INCLUDE THE PORTIONS OF THE CONDOMINIUM PROPERTY NOT INCLUDED WITHIN UNIT BOUNDARIES AS DESCRIBED IN THE DECLARATION OF CONDOMINIUM.
 2. SUBJECT PROPERTY LIES WITHIN FLOOD ZONE "A3", B.F.E. 19.0' AND B.F.E. 20.0' AS PER F.I.R.M. PANEL NO. 120153 0333 B, DATED 3-15-84.
 3. BOUNDARY SURVEY PERFORMED JULY 23, 2004.

- LEGEND
- C.M.F. (CONCRETE MONUMENT FOUND) SIZE AND NUMBER DENOTED.
 - PERMANENT REFERENCE MONUMENT (P.R.M.) SET, NUMBER 4091
 - (4" SQUARE CONCRETE MONUMENT)
 - (4" FIELD DATA)
 - (C) CALCULATED DATA
 - (P) POINT OF BEGINNING
 - (P.O.B.) BENCHMARK REFERENCE MONUMENT
 - (P.M.) PERMANENT CONTROL POINT
 - (C.C.) CONC. CONCRETE
 - (O.R.) OFFICIAL RECORDS BOOK
 - (P.C.) PAGE
 - (P.F.) PARCEL IDENTIFICATION
 - (P.S.) PARCEL IDENTIFICATION
 - (P.B.) LICENSED BUSINESS
 - (L.S.) LICENSED SURVEYOR
 - (E.V.) ELEVATION

5/8" I.R.F. LB #2230
LINE TABLE

NO.	BEARING	DISTANCE
L1	N 89°20'53" W	30.00'
L2	N 89°20'53" W	15.00'
L3	N 89°20'53" W	15.00'
L4	N 00°39'07" E	45.00'
L5	N 89°20'53" W	36.00'

POINT OF BEGINNING
GAS EASEMENT LINE TABLE
5/8" I.R.F. #2230

LINE	BEARING	DISTANCE
EL1	S 01°03'33" E	15.88'
EL2	S 00°14'39" E	42.53'
EL3	S 00°23'36" W	127.33'
EL4	S 02°13'15" W	46.98'
EL5	S 00°13'07" W	65.13'
EL6	S 00°46'01" W	110.98'

BOUNDARY SURVEY - PLOT PLAN
CLEMENTS SURVEYING, INC.
509 8TH AVENUE WEST
SUITE 140
PALMETTO, FLORIDA 34221
LB #6667 (941) 729-6690 FAX (941) 729-7580