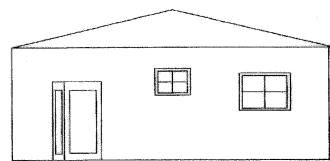
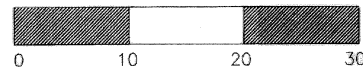
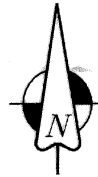
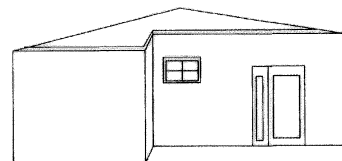


PASSAGE KEY CONDOMINIUM

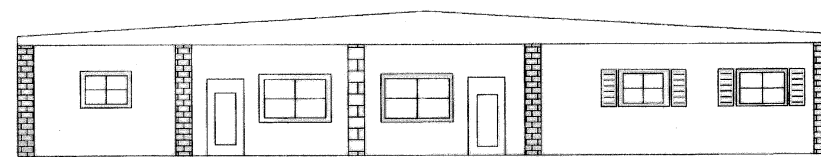
LYING AND BEING IN
SECTION 7, TOWNSHIP 34 SOUTH, RANGE 16 EAST
CITY OF ANNA MARIA
MANATEE COUNTY, FLORIDA



FRONT VIEW



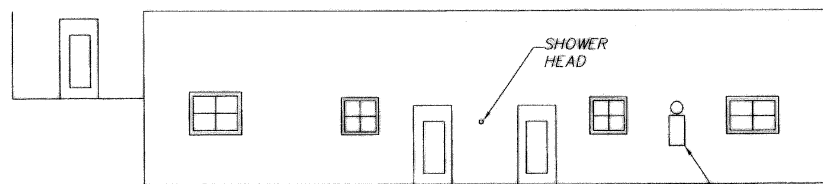
REAR VIEW



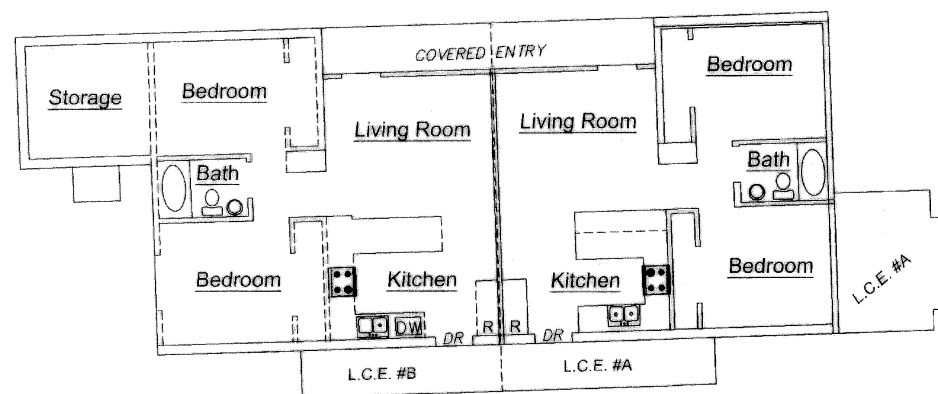
LEFT ELEVATION

HIGH POINT OF ROOF = 17.93'
LOW POINT OF ROOF = 14.62'

F.F. ELEV. UNIT "A" = 6.20
F.F. ELEV. UNIT "B" = 6.20



RIGHT VIEW

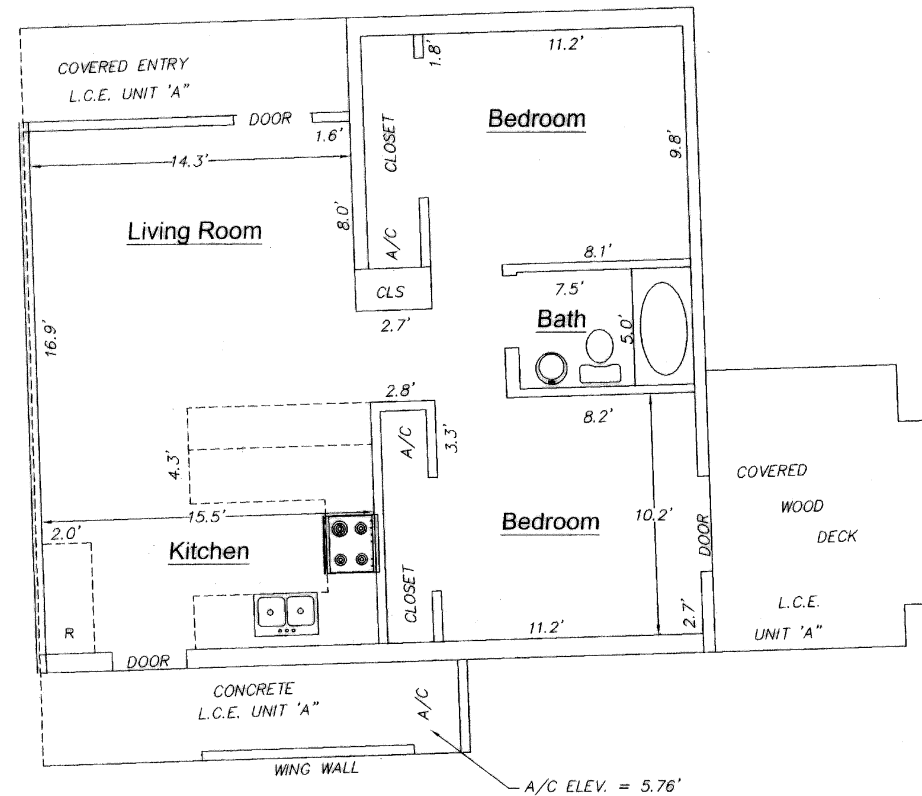


FLOOR VIEW

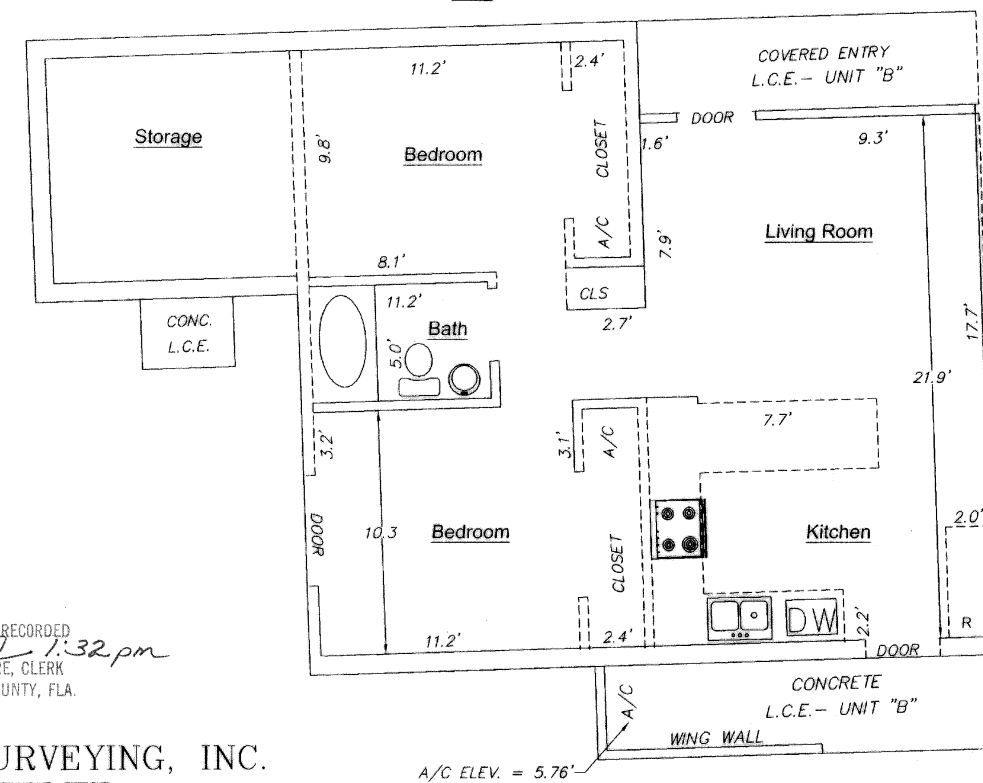
LEGEND

L.C.E. = LIMITED COMMON ELEMENT
DW = DISHWASHER
R = REFRIGERATOR
A/C = AIR CONDITIONER
ELEC. = ELECTRIC
DR = ENTRY DOOR

Unit "A"
1" = 5'



Unit "B"
1" = 5'



FILED AND RECORDED
5/30/2009 @ 1:32 pm
R. B. SHORE, CLERK
MANATEE COUNTY, FLA.



CLEMENTS SURVEYING, INC.

509 8TH AVENUE WEST
SUITE 140
PALMETTO, FLORIDA 34221
LB #6667 (941) 729-6690 FAX (941) 729-7580